



HUMANITIES
KANSAS



We  the Humanities

ANNUAL REPORT

FY 2020

Dear Friends,

Thank you.

This past year, Humanities Kansas responded to community cultural needs with humanities at home opportunities and pivoted resources to support local organizations. It was a year unlike any in recent memory, but the momentum behind HK's Movement of Ideas did not waver and that's because of you and your support.

Enthusiastic local project directors identified needs and used HK programs, grants, and special projects to reach out to their communities. Humanities scholars were quick to say yes when HK approached them about offering book discussions and history presentations online. Event participants learned to Zoom and together we sparked conversations, shared ideas, and connected with one another through our screens, on the phone, and when possible, in person.

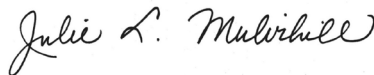
The results are amazing. This work couldn't happen on this scale or make this kind of impact across Kansas without generous and passionate donors whose contributions ensured that all HK events remained free and open to the public in whatever shape that took in 2020. You didn't miss a beat. The same is true for HK's board of directors and staff members who rose to every challenge.

Stories are the heart of this work. Since our founding as an independent nonprofit in 1972, Humanities Kansas has used stories rooted in the humanities to spark fresh thinking and navigate challenging conversations. Stories carry our culture; they educate and change us. The stories of this past year will unfold for generations to come and we gratefully connect ours to yours.

All the very best,

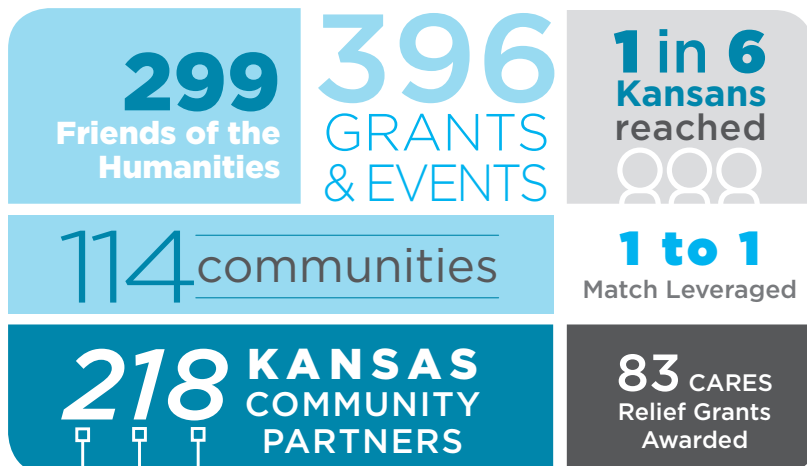


Jason Wesco
Chair, Board of Directors (2020)



Julie L. Mulvihill
Executive Director

THE MOVEMENT OF IDEAS IN FY 2020



HK 2020 Board of Directors

Patricia E. Ackerman, Abilene
Brad Allen, Lawrence
Kent Blansett, Lawrence
Conny Bogaard, Garden City
Lori A. Goetsch, Manhattan
Kim Goodnight, Maize
Natalie G. Haag, Topeka
Nickolaus Hernandez, Dodge City
Mike Heldstab, Wichita
Brandon Hines, Hays
Jane Holwerda, Dodge City
James T. Lane, Overland Park
Roetta Mann, Quinter
Denise L. McNabb, Waverly
Eric Norris, Lawrence
Kim Perez, Hays
Sheilah Philip, Overland Park
Lisa Sisley, Manhattan
Jason Wesco, Pittsburg (Chair)

Staff

Julie L. Mulvihill,
Executive Director
Leslie Daugharthy,
Director of Finance
Abigail Kaup,
Program Officer
Tracy Quillin,
Associate Director
Leighann Thone,
Development Officer
Leslie VonHolten,
Director of Grants and Outreach

On the cover: *Crossroads: Change in Rural America* Smithsonian exhibition at the Volland Store, Alma.

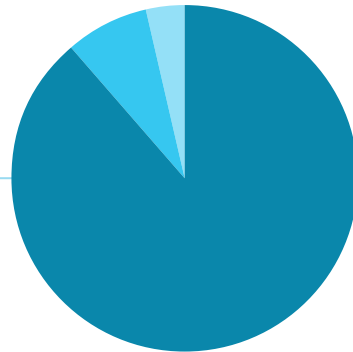
FY 2020 Financial Overview

November 1, 2019 – October 31, 2020

HK receives income from diverse public and private sources. The National Endowment for the Humanities remained the single most important source of income in 2020, providing 89% of HK revenues. The private sector provided 8%, with 3% coming from the State of Kansas. In Fiscal Year 2020, Kansans contributed \$724,796.62 in Cost Share and In-Kind Services. In FY 2020, HK received \$471,468 in relief funds from the Coronavirus Aid, Relief, and Economic Security (CARES Act) economic stabilization plan. These funds are included in the NEH and Program and Program Services categories.

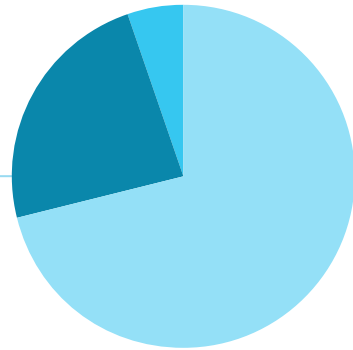
INCOME

● NEH	\$ 1,257,567
● Private Donations, Earnings	\$ 107,503
● State of Kansas	\$ 50,501



EXPENDITURES

● Program & Program Services	\$ 992,119
● General Management	\$ 328,386
● Financial Development	\$ 73,388



Full audited financial statements prepared by BT&Co., P.A., are available for review in the HK office.

Friends of Humanities Kansas: Thank You!

The work of the Friends of Humanities Kansas is made possible by the generous support of the following individuals and organizations. This list reflects cumulative financial gifts received in Fiscal Year 2020 (November 1, 2019 – October 31, 2020).

* *Friends who have given for 10 or more years.*

WISDOM & VISION SOCIETY

Humanities Kansas invites you to join the Wisdom & Vision Society. Tax-deductible annual contributions of \$1,000 or more support the movement of ideas across Kansas. Our warm thanks to the following individuals in the Wisdom & Vision Society for HK's Fiscal Year 2020.

- * Randolph Austin, Topeka
CCS Family Fund – Topeka Community Foundation
- * Jerry Lightcap, Offerle
- * Susan Lynn & Brian Wolfe, Iola
- * Gene & Barbara Merry, Burlington
- * Craig Miner Family Trust, Wichita *In Memory of Craig Miner*

- * Julie Mulvihill, Perry
Paula K. Sauder, Emporia
- * Kim Stanley & Tom Halliburton, McPherson
- * Jason Wesco, Pittsburg *In Memory of William Stafford*

INDIVIDUALS

Lead (Donations of \$500-\$999)

- * The Michael Bayouth Charitable Fund, Wichita
- * Kelly & Patrick Landes, Junction City
- * George Laughead, Lawrence
James D. Oliver, Lenexa
- * Tim & Jerrye Van Leer, Phoenix AZ

Inspire (Donations of \$250-\$499)

- Brad Allen & Erin Bennett, Lawrence
- William Benso, Lawrence
- * Mary Cottom, Manhattan *In Memory of Nancy Stupnick Brumm*
- * Deborah & John Divine, Salina
- * Tex & Betty Fury Fund of Greater Salina Community Foundation
- * John & Ines Gilbert, Lawrence
Natalie Haag, Topeka
- * Steven & Annabeth Hind, Hutchinson
Brandon Hines, Ellis
- * Kathleen Holt, Cimarron
- * Jane M. Holwerda, Dodge City
Sharon Kessinger, Marysville
Elizabeth Kowalchuk, Lawrence
- * Doreen Maronde, Lenexa
- * Karen & John McCulloh, Manhattan
- * Chuck Moore, Colby
- * Joan Nothern, Middleton WI
Sheilah Philip, Overland Park
- * Ramon & Eva Powers, Topeka
- * Tracy Quillin, Lawrence
- * Robert & Elizabeth Ross, Wichita
Kent Stehlik, Dodge City *In Memory of Joyce and Howard Stehlik*
- Peter & Pamela Steitz, Sun Prairie WI
- Douglas Stuckey, Pittsburg
- Wyatt & Roderick Townley, Shawnee Mission

- * David & Barbara Walker, Tucson AZ
- * Ron & Barbara Wood, Fort Scott

Engage (Donations of \$150-\$249)

- Karlea Abel, Pittsburg
- Janet C. Armstead, Wamego
- Katherine Bailes, Overland Park
- * Judy Carroll, Independence
- Sarah Ruiz Chavez, Olathe
- Dudley Donahue, Durham
- * Peggy Frahm, Colby
- * Susan & Kent Garlinghouse Fund-Topeka Community Foundation
- * Virginia Gleason, Kinsley
Lori Goetsch, Manhattan
- * Howard W. Hildenbrand, Lecompton
- * Martha Selfridge Housholder, M.D., Wichita
- * Howell Giving Fund, Wichita *In Memory of John Howell*
- * Jim Hoy, Emporia
- * Anita L. Jones, Wichita
Suzanne Lane, Topeka
- * Judy Bontrager Langley, Hutchinson
- * Carolyn Lindsey, Wichita
- * Jim Maag, Topeka
- * William Mai, Sharon Springs
- * Carol Mullen, Lawrence
- * Leo E. Oliva, Woodston
- * John & Rachel Pannabecker, North Newton
- * Loren Pennington, Emporia
Kim Perez, Hays
- * Tom Pott, Leawood
Kris Roberts, Leavenworth
- * Dr. Brigitte Roussel, Wichita
- * Norman Saul, Lawrence
- * Elizabeth Schultz, Lawrence
- * Robert & Mary Seymour, Leavenworth
Lisa Sisley, Manhattan

- * Keith & Aldine Sprunger, North Newton
- * John H. Stauffer, Topeka
- * Paul M. Steele Trust, Colby
Al & Jan Stevens, Dodge City
- * Linda Stewart, Wellington *In Honor of the Chisholm Trail Museum Volunteers*
- * Ann Strecker, Topeka
Thomas & Lisa Stubbs, Topeka
- * William Tsutsui & Marjorie Swann, Conway AR
Leslie & Tim VonHolten, Lawrence
Evelyn & Mike Wilson, Topeka *In Memory of Clarence and Levoe Zabel*
- Jack Wisman, Topeka

Spark (Donations of \$50-\$149)

- Anonymous (2)
- * JoAnn Cool Albán, Savannah GA
Alan Albers, Cunningham
- * Lou Allen, Topeka
David & Mary Kate Ambler, Lawrence
Mark & Vergie Anderson, Kinsley
Andi & Mark Andres, Newton
- * Thomas F. Averill & Jeffrey Ann Goudie, Topeka
- * Constance Banwart, Fort Scott
- * Bill & Myrna Barnes, Elkhart
- * Aaron Barnhart & Diane Eickhoff, Kansas City MO
- * Angela O. Bates, Bogue
Donna Becker, Newton
Deborah K. Berges, Onaga *In Honor of Rheva Boswell*
- * Donald Biggs, Leawood
Theresa Brake, Kinsley *In Honor of Joan Weaver, Kinsley Librarian*
Steve & Derie Briman, Topeka
- * Tony Brown & Becky Henderson, Baldwin City
Larry & Sonja Burke, Lawrence
Catherine Campbell, Lawrence
John Carlin, Manhattan
- * Gene T. Chávez, Ed.D., Lenexa
Milton Claassen, Newton
Ellen Collier, Lawrence
- * Mary Conrad, Kansas City
Richard Cramer, Pratt
Daniel Creitz, Pittsburg
- * Virgil W. Dean, Lawrence
Jeff & Brenda Dempsey, Derby
Luke Desmond, Overland Park
David E. & Elizabeth Domann Charitable Trust, a Donor-Advised Fund of the U.S. Charitable Gift Trust
Chris & Kaye Drahozal, Lawrence
Peg Dunlap, Topeka
Ron & Dawn Dutton, Elmdale
- * Jean Kygar Eblen, Lawrence
Larry Erickson, Manhattan
Christine Ewing, Wakarusa
Jean Fanshier, Stafford *In Memory of Marion Hearn, President of Stafford Historical and Genealogical Society*
Roger & Arilla Fedde, Mankato
- * Michael J. Fox & Sue Schlegel, Lindsborg
Pat Frederickson, Anne Frederickson, & Sue Zschoche, Wamego *In Memory of Ronald H. Frederickson*
- * Rodger & Vivian Funk, Garden City
Jim & Karen Gilpin, Iola
Kim Goodnight, Maize
- * Rosetta Graff, Kinsley

- * Anne Greitl, Topeka
Marlene Gritman, Glasco
Susan Hague, Cedar Point
Allan & Louise Hanson, Lawrence
Saralyn Reece Hardy, Lawrence
Jerry & Nan Harper, Lawrence
- * C. Larry Heck, Wichita
Becky Hege, Newton
Mike Heldstab, Wichita
Susan Hines, Spearville
- * Raylene Hinz-Penner, Topeka
- * Warren & Sharon Hixson, Hutchinson
Greg Hoots & Cheryl Meditz, Kansas City
- * Ken & Peggy Horton, Elkhart
Mary Jane Hurley, Concordia
- * Sarah J. Huskey, Iola
Jane & Mickey Imber, Lawrence
- * Bill Jenkins, Wichita
Jennifer McLeod Kassebaum, Burdick
Jim & Eloise Kelly, Independence
Sarah Kirk, Lecompton
Linda O'Nelio Knoll, Pittsburg
Dr. William Krusemark, Kansas City MO
Rachel Lamm, Colby
Kathie Leighty, Ford
Jim Leiker, Shawnee
- * Nancy Keim Lengel, McPherson
- * Linda M. Lewis, Lindsborg
- * Jerry D. Lomshek, Pittsburg
- * Jean Lundt, Independence
- * Ruth Madell, Westmont IL
J.A. Maska, Hays
Shirley McClintock, Council Grove
Michael McGrew, Lawrence
James McHenry, Topeka *In Honor of Eric McHenry*
Denise McNabb, Waverly
- * Charles Menghini, Pittsburg
- * Tim Miller, Lawrence
- * Shala Mills, Rosendale NY
Ann Miner, Colby
- * Donna Jones Morris & Raymond Morris, Byers CO
Linda Morse, Manhattan
Julia K. Muller & Earl K. Shreckengast, St. Louis MO
Robin & Dennis Newall, Emporia
Miriam Nofsinger, North Newton
Diana Palenz, Wichita
Tracie Partridge, Wichita
- * Ruth & Reed Peters, Larned
Paul & Pat Phillips, Hays
- * Joe Pierron & Diana Carlin, Lawrence
Jordan & Britanni Poland, Wichita
Robert Gregory Poole, Pittsburg
Michelle & Brian Powell, Lawrence
- * Jay Price, Wichita
Andrea & Will Ramsey, Leawood
- * Dr. M.C. Reay, Manhattan
- * Roger & Lin Rhoades, Overland Park
Bill & Linda Richter, Manhattan
Gina Riedel, Gorham
Murl Riedel, Topeka
- * Sabatini Family Foundation, Topeka
Sam Sackett, Wichita
- * Barbara Schmidt, Independence
- * Callie Seaton, Winfield *In Memory of F. David Seaton*
- * Bradley & Susie Shaw, Manhattan
- * Frances Siemens, North Newton

Continued on page 6

- Paula & Kerry Smith, Marysville
Martha Spacek, Topeka
Anita Specht, Salina
- * Clinton & Delaine Stalker, Satanta
 - William Stapleton, Belpre
 - Diana Staresinic-Deane, Ottawa
 - George & Mary Stephenson, Lansing
 - * Margy Stewart, Junction City
 - * Allen & Ila Stone, Hutchinson
 - Susan Sutton, Concordia
 - * John Sweets & Renée Melchiorre, Swannanoa NC
In Memory of Rev. Donald L. Conrad
 - * Deanell Tacha, Lawrence
 - John Edgar Tidwell, Lawrence
 - Jami Frazier Tracy, Valley Center
 - Karen Trail, Manhattan
 - * John & Kathy Triplett, Junction City
 - * Nancy Vogel, Lawrence
 - Nancy Wagner, Topeka
 - * Laurie Ward, Lawrence
 - * Alison Watkins, Lawrence
 - * Carmaletta Williams, Grandview MO
 - * James Woelfel, Lawrence *In Memory of Sarah Trulove*
 - Stephen Wolgast, Topeka
 - * M. Lee Wright & Alice Eberhart-Wright, Topeka
 - Mitchel Zimmerman, Lawrence

Movement (Donations of up to \$49)

- Anonymous (1)
Susan Adams, Wichita
Sarah Bell, Lawrence
Jennifer Bergen, Manhattan
Galen Boehme, Offerle
- * William Clyde Brown, Salina
 - Marcia Brox, Shawnee
 - Samuel Chapman, Overland Park
 - Leslie Daugharthy, Topeka
 - * Bill Drews, Hutchinson
 - Kristen Epps, Manhattan
 - * Bill & Eenie Fitzpatrick, Independence
 - Bruce Grover & Kate Digby, Manhattan
 - Jerry L. Hamm, Coffeyville
 - * Ellen R. Hansen, Emporia
 - Layne Hunley, Holton
 - Val Ireland, Topeka
 - Paula & Denny Johnson, Baldwin City
 - Abigail Kaup, Lawrence
 - Sheila Lampe, Piqua
 - Stephanie Luna, Wichita
 - Ruth Maus, Topeka
 - * Jerry & Catherine Newland, Silver Lake
 - * Alvin & Gayle Peters, Garnett
 - Trish Reeves, Prairie Village
 - WenDee Rowe, Inman
 - John Salem, Wichita
 - * Fayeann Sandstrum, Winfield
 - Pamela Sanfilippo, St. Louis MO
 - Larry Schwarm, Wichita
 - Mr. Lindsay Smith, Manhattan
 - Stacey Smith, Hays
 - * George & Vikki Jo Stewart, Wichita
 - Larry Tenopir, Topeka
 - Leighann Thone, Lawrence
 - * Sandra Wiechert, Lawrence *In Memory of
Allen Wiechert*

ORGANIZATIONS

Donations of \$20,000 or more

The Andrew W. Mellon Foundation *Democracy and the Informed Citizen* Initiative through the Federation of State Humanities Councils, Washington D.C.

Donations of \$10,000-\$19,999

ITC Holdings Corp, Topeka

Donations of \$1,000-\$9,999

- * Frahm Farmland, Inc., Colby
- * Freedom's Frontier National Heritage Area, Lawrence
- Hall Center for the Humanities at the University of Kansas, Lawrence
- Topeka Community Foundation
- Western Kansas Community Foundation, Garden City

Donations of \$150-\$499

- Basehor Community Library
- * BT&Co., P.A., Topeka
- Derby Public Library
- Friends of Baldwin City Public Library
- Manhattan Library Association
- Oberlin City Library
- * Overland Park Historical Society
- Pratt Public Library
- The Volland Store, Alma

Donations of \$50-\$149

- Aldersgate Village, Topeka
- * Ashland Library
- Butterfield Trail Association, Winona
- Cause LLC, Manhattan
- City of Wellington
- * Friends of the Augusta Public Library
- Friends of Iola Public Library
- * Friends of Morrill Public Library, Hiawatha
- * Ford County Historical Society, Dodge City
- Gardner Historical Museum
- Glasco Community Foundation
- * Goodland Public Library
- Greenwood Preservation Society, Eureka
- Leonardville Nursing Home
- Mankato City Library
- Onaga Historical Society
- Perry Pride
- Rooks County Historical Society and Museum, Stockton
- * Santa Fe Trail Historical Society, Baldwin City
- * Sociedad Hidalgo, Inc., Shawnee
- * Stafford County Historical & Genealogical Society, Stafford
- Thrive Allen County, Iola
- Wilson County Conservation District, Fredonia

Donations of up to \$49

AmazonSmile

If we have not reported your gift correctly, please accept our apology and contact us: info@humanitieskansas.org or 785-357-0359.

Community Partners

Humanities Kansas collaborated with 218 Kansas nonprofit organizations in FY 2020 to spark conversations and generate insights through Humanities for All, Culture Preservation, Quick Grants, and CARES Act Relief Grants; community resource programs including the Poet Laureate of Kansas, Speakers Bureau, and Talk About Literature in Kansas; and the *Crossroads: Change in Rural America* and *Democracy and the Informed Citizen* statewide initiatives.

5.4.7 Arts Center, Greensburg
 Abilene Public Library
 Aldersgate Village, Topeka
 Allen County Historical Society, Iola
 Amelia Earhart Birthplace Museum, Atchison
 Arkansas City Area Arts Council
 Arts & Medicine Program KU School of Medicine, Kansas City
 ArtsConnect Topeka
 Ashland Library
 Atchison Amelia Earhart Foundation
 Atchison Public Library
 Atwood Public Library
 Augusta Public Library
 Basehor Community Library
 Bonner Springs City Library
 Boot Hill Museum, Dodge City
 Bowlus Fine Arts Center, Iola
 Bradford Memorial Library, El Dorado
 Brewster Place Retirement Community, Topeka
 Brown County Historical Society, Hiawatha
 Butler Community College, Community Advancement, El Dorado
 Butler Community College Library & Archives, El Dorado
 Caldwell Public Library
 Chanute Public Library
 Chapman Area Preservation Society
 Cheney Lake Watershed, Inc., Arlington
 Chisholm Trail Seniors, Wichita
 Cimarron City Library
 City of Neodesha
 City of Sedan
 Clearwater Public Library
 Coffeyville Historical Society
 Coffeyville Public Library
 Courtland Arts Council
 Dickinson County Historical Society, Abilene
 Do Good Productions, Inc., Overland Park
 Dodge City Community College
 Dodge City Public Library
 Doniphan County Historical Society, Troy
 Donnelly College, Kansas City
 Dorothy Bramlage Public Library, Junction City
 Douglas County Historical Society, Lawrence
 Dyck Arboretum of the Plains, Hesston
 Edwards County Historical Society Museum, Kinsley
 Effingham Community Library
 Eisenhower Foundation, Abilene
 Eisenhower Presidential Library, Museum, and Boyhood Home, Abilene
 Ellinwood Community Historical Society
 Ellinwood School & Community Library
 Emporia Public Library
 Emporia State University
 Eudora Area Historical Society
 Finney County Historical Society, Garden City
 Flint Hills Discovery Center Foundation, Manhattan
 Florence Historical Society
 Ford County Historical Society, Dodge City
 Fort Hays State University, Hays
 Fort Hays State University, Department of History, Hays
 Fort Larned Historical Society, Larned
 Fort Wallace Museum, Wallace
 Franklin County Historical Society/ Old Depot Museum, Ottawa
 Freedom's Frontier National Heritage Area, Lawrence
 Friends of Baldwin City Public Library
 Friends of Leavenworth Public Library
 Gardner Historical Museum
 Garnett Public Library
 Geary County Historical Society & Museums, Junction City
 Goddard Public Library
 Goodland Public Library
 Greater Topeka Partnership
 Gridley Branch of Coffey County Library
 Harvester Arts, Wichita
 Harvey County Historical Museum & Archives, Newton
 Haskell Indian Nations University Foundation, Lawrence
 Hays Public Library
 Haysville Friends of the Library
 Heritage Associates of Jennings, Inc.
 Hesston Public Library
 Hodgeman County Economic Development, Jetmore
 Horton Public Library
 Hutchinson Art Center
 Hutchinson Public Library
 Hyman Brand Hebrew Academy/ Jewish Community Center, Leawood
 Independence Public Library
 Interurban ArtHouse, Overland Park
 Jackson County Historical and Genealogical Society, Holton
 Jayhawk Breakfast Rotary Club & Ecumenical Ministry, Lawrence
 Jefferson County Historical Society, Oskaloosa
 Jetmore Public Library
 Johnson County Museum, Overland Park
 Johnson County Retired Teachers Association, Prairie Village
 Kansas Authors Club, Hutchinson
 Kansas Authors Club, Kechi
 Kansas Authors Club, Lawrence
 Kansas Aviation Museum, Wichita
 Kansas Barbed Wire Collectors Association, La Crosse
 Kansas City Kansas Public Library
 Kansas City Latin Jazz Orchestra, Kansas City
 Kansas Historical Foundation, Topeka
 Kansas Cosmosphere and Space Center, Hutchinson
 Kansas Farmers Union Foundation, Lawrence
 Kansas Oral History Project, Inc., Topeka
 Kansas Post Rock Limestone Coalition, Inc., Lucas
 Kansas Public Telecommunications Service, Wichita
 Kansas Territory Bottle & Postcard Club, Hutchinson
 Kansas Wesleyan University, Salina
 Kauffman Museum, North Newton
 Kingman County Historical Society, Kingman
 Kinsley Public Library
 KMUW Wichita Public Radio
 KTWU, Washburn University, Topeka
 Lakeview Village Retirement Community, Lenexa
 Lawrence Public Library Friends & Foundation
 Lebanon Community Library
 Lebo Branch of Coffey County Library
 Legacy, A Regional Community Foundation, Winfield
 Life in a Jar Foundation, Fort Scott
 Linwood Community Library
 Little House on the Prairie Museum, Independence
 Louisburg Library
 Lyon County History Center & Society, Emporia
 Mahaffie Stagecoach Stop & Farm Historic Site, Olathe
 Mamafilm, Wichita
 Manhattan MLK Jr. Memorial Committee
 Manhattan Public Library
 Mankato City Library
 Marais des Cygnes Chapter DAR, Osawatomie
 Martin & Osa Johnson Safari Museum, Chanute
 Mary Cotton Public Library, Sabetha
 Marysville Public Library
 McPherson County Old Mill Museum, Lindsborg
 McPherson Museum & Arts Foundation
 Medicine Lodge Peace Treaty Association
 Mid-America All-Indian Center, Wichita
 Mid-America Nazarene University, Olathe
 Miners Hall Museum, Franklin
 Mini-Moccasins, Inc., Lawrence
 Monticello Community Historical Society, Shawnee
 Morris County Historical Society, Council Grove
 Moundridge Public Library
 Museum of World Treasures, Wichita
 National Orphan Train Complex and Research Center, Concordia
 New Generation Society of Lawrence
 Newton Public Library
 Nickerson Public Library
 Norton County Arts Council, Norton
 Norton Public Library
 NSDAR - Four Winds Chapter, Garnett
 Oakley Public Library
 Oberlin City Library
 Olathe Public Library
 Onaga Historical Society
 Original Pony Express Station No. 1 & Museum, Marysville
 Oskaloosa Public Library
 Ottawa Library
 Overland Park Historical Society
 Oz Museum/Columbian Theatre Foundation, Inc., Wamego
 Paola Free Library
 Parsons Public Library
 Pittsburg Public Library
 Pittsburg State University
 Pratt Public Library
 Republic County Historical Society Museum, Belleville
 Reno County Museum, Hutchinson
 Reno County Historical Society, Hutchinson
 Rice County Historical Society, Lyons
 Richmond Public Library
 Riley County Seniors' Service Center, Manhattan
 Russell Public Library
 Salina Art Center
 Santa Fe Trail Association, Larned
 Scott County Historical Society, Scott City
 Shawnee County Historical Society, Topeka
 Shepherd's Center of Kansas City
 Smoky Hill Museum, Salina
 Special Olympics Kansas, Inc., Mission
 Stafford County Historical & Genealogical Society, Stafford
 Stage 9, Hutchinson
 Storytime Village, Inc., Wichita
 Strataca: Kansas Underground Salt Museum, Hutchinson
 Sumner County Historical & Genealogical Society, Winfield
 Sunflower Outreach Service, Winfield
 Tabor College, Hillsboro
 The Kansas African American Museum, Wichita
 The Volland Store, Alma
 Thomas County Historical Society, Colby
 Tonganoxie Community Historical Society
 Tonganoxie Public Library
 Topeka Collegiate Commons
 Topeka Genealogical Society
 Topeka & Shawnee County Public Library
 Topeka Youth Project, Inc.
 Trading Post Historical Society, Pleasanton
 Trego County Historical Society, WaKeeney
 Tri-State Antique Engine and Threshers Association, Bird City
 United Methodist Men, Paola
 University for Man, Community Learning Center, Manhattan
 University of Kansas, Edwards Campus, Overland Park
 University of Kansas Humanities Program, Lawrence
 University Press of Kansas, Lawrence
 Valley Center Public Library
 Village Presbyterian Church, Prairie Village
 Wabaunsee County Historical Society, Alma
 Wamego Public Library
 Washburn University, Topeka
 Watkins Museum of History, Lawrence
 Wichita County Library, Leoti
 Wichita Genealogical Society
 Wichita Public Library Foundation
 Wichita-Sedgwick County Historical Museum
 Wichita State University
 Wichita State University Continuing Education
 Wilson County Historical Society, Fredonia
 Wilson County Old Iron Club, Fredonia
 Winfield Public Library
 World's Largest Things, Inc., Lucas
 Wyandotte County Historical Society, Bonner Springs



HUMANITIES KANSAS

112 SW 6th Ave, Suite 400
Topeka, KS 66603
P. (785) 357-0359
F. (785) 357-1723

humanitieskansas.org
info@humanitieskansas.org
/humanitieskansas
/humanitiesks

Nonprofit Org.
U.S. Postage
PAID
Kansas City MO
Permit No. 523

The Movement on the Map HK OUTREACH FY 2020

Using HK grants and resources, 114 communities created 396 humanities opportunities for the people of Kansas in FY 2020.

