

KANSAS HUMANITIES COUNCIL

2017 **annual report** to donors

STRENGTHENING CIVIC LIFE THROUGH THE HUMANITIES



Dear Friends,

In 2017, the Kansas Humanities Council celebrated its 45th anniversary. Along with a celebration in March, we spent the year taking stock of our work and challenging ourselves to chart a purposeful course for the future. Many of you helped by participating in focus groups, answering survey questionnaires, and joining in one-on-one interviews. We learned many key insights, but two stick out. Simply:

- 1) This work increasingly matters.
- 2) You trust KHC.

Your suggestions included ideas about civil discourse, expanding our audiences, engaging in big ideas, and offering new opportunities within existing and valued program and grants resources. We've taken your suggestions to heart and you'll see opportunities throughout 2018 to engage in new ways.

The humanities help us understand what it means to be human and this requires that we listen and engage with one another. The success of the Kansas Humanities Council requires the enthusiasm of project directors who give our programs shape and spirit, the expertise of scholars, participants at events, the guidance of board members, teamwork from staff, and support from donors whose contributions sustain the programs across Kansas. We thank you for this support and we offer this report to you.

Linda K. Smith
Chair, Board of Directors

Julie L. Mulvihill
Executive Director

MISSION

The Kansas Humanities Council connects communities with history, traditions, and ideas to strengthen civic life.

REACH

In fiscal year 2017, KHC:

- Supported 610 events and grants
- Worked in 119 communities
- Partnered with 201 organizations
- Reached 330,466 Kansans
- Awarded \$301,928 in support of humanities projects
- Leveraged \$868,545 in local cost share and contributions

COMMITMENT TO KANSAS

As the only statewide public humanities resource in Kansas, KHC provides access to and support for quality grassroots cultural programs.

PHILOSOPHY AND VALUES

Democracy demands wisdom and vision in its citizens, and the humanities provide a way to gain both. Healthy communities depend on the humanities to provide a forum for the exchange of ideas and viewpoints, illuminate the conditions of contemporary life, offer opportunities to deepen understanding of our shared heritage, and encourage innovation in civic life.

BELIEFS

We believe that KHC engagement should be humanities and community-driven, relevant, lively, and include compelling stories from diverse perspectives. Our work reflects civility, open dialogue, equality of voices, and fairness.

KHC GOALS

Humanities Innovation
Powerful Community Partnerships
Long-Term Sustainability

2017 BOARD OF DIRECTORS

Patricia E. Ackerman, Abilene
Cheryl Hofstetter Duffy, Hays
Lori A. Goetsch, Manhattan
Natalie G. Haag, Topeka
Brandon Hines, Dodge City
Nickolaus Hernandez,
Arkansas City
Jane Holwerda, Dodge City
Clarence Lang, Lawrence
Denise L. McNabb, Waverly
James Oliver, Overland Park

Leonard Ortiz, Lawrence
Kim Perez, Hays
Beth Radtke, Kansas City
William A. Ramsey, Leawood
Sam Sackett, Wichita
Linda K. Smith, Salina CHAIR
Jan Stevens, Dodge City
Lisa D. Stubbs, Topeka
Kip A. Wedel, North Newton
Jason Wesco, Pittsburg

STAFF

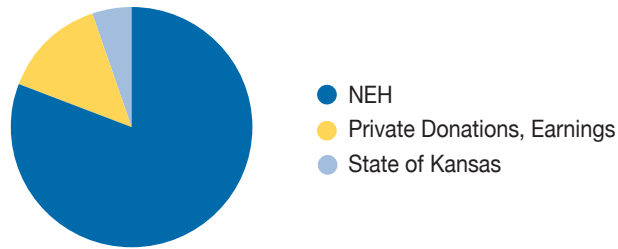
Julie L. Mulvihill, Executive Director
Iesha Kincaid, Executive Assistant
Ruth Madell, Budget Director
Valerie Mendoza, Director of Programs
Tracy Quillin, Associate Director
Muriel Riedel, Director of Grants

FY 2017 Financial Report

The Kansas Humanities Council receives income from diverse public and private sources. The National Endowment for the Humanities remained the single most important source of income in 2017, providing 81 percent of Council revenues. The private sector provided 14 percent, with 5 percent coming from the State of Kansas. In Fiscal Year 2017, Kansans contributed \$868,544.77 in Cost Share and In-Kind Services.

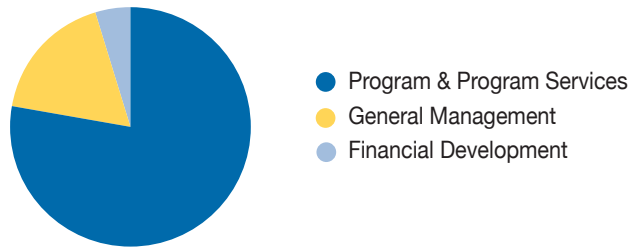
FY 2017 Income

NEH	\$712,990
Private Donations, Earnings	\$123,329
State of Kansas	\$ 44,128



FY 2017 Expenditures

Program & Program Services	\$676,253
General Management	\$151,451
Financial Development	\$ 40,841



*Full audited financial statements prepared by Berberich, Trahan, & Co., P.A., are available for review in the KHC office.

Friends

The work of the Kansas Humanities Council is made possible by the generous support of the following individuals and organizations. This list reflects financial gifts received in fiscal year 2017.

*Friends who have given for ten or more years.

Leadership - \$1,000 and above

- * Randolph Austin, Topeka
- * Margie Braden, Clay Center
- * Marion & Ken Cott, Topeka
- Jane Holwerda, Dodge City
- Susan Lynn & Brian Wolfe, Iola
- Jason McClure, Kansas City
- * Gene & Barbara Merry, Burlington
- * Patricia A. Michaelis, Topeka
- William & Andrea Ramsey, Leawood
- Paula Sauder, Emporia

- George Laughead, Lawrence
- * John & Karen McCulloh, Manhattan
- David J. Waxse, Overland Park
- * Robert Wunsch, Kingman

Patron - \$250-\$499

- Myrna & Bill Barnes, Elkhart
- * Michael Bayouth, Wichita
- LeAnn D. Clark, Hesston
- * Mary Cottom, Manhattan
- Henry Fortunato, Overland Park
- Brandon & Carrie Hines, Dodge City
- * Warren & Sharon Hixson, Hutchinson
- * Kathleen Holt, Cimarron
- * Daniel Hoyt, Manhattan
- * Anita Jones, Wichita
- * Nancy Landon Kassebaum, Burdick
- * Bob Linder, Manhattan
- * Doreen Maronde, Lenexa
- * Denise McNabb, Waverly
- * Jorge & Patricia Nobo, Topeka
- * Joan Nothern, Glasco
- * Cecil O'Brate, Garden City
- James Oliver, Overland Park
- Leonard Ortiz, Lawrence
- Aaron Otto, Roeland Park
- * John & Ardith Pierce, Lawrence
- * Ramon & Eva Powers, Topeka

- * Paula Ripple, Dodge City
- * Eileen Robertson, Humboldt
- * Robert & Elizabeth Ross, Wichita
- Sam & Sarah Sackett, Wichita
- * Norman Saul, Lawrence
- * Kim Stanley & Tom Halliburton, McPherson
- Jan & Al Stevens, Dodge City
- * Ron & Annette Thornburgh, Topeka
- Wyatt & Roderick Townley, Shawnee Mission
- * William Tsutsui & Marjorie Swann, Conway AR
- in memory of Rita Napier*
- Kip A. Wedel, North Newton

Partner - \$750-\$999

- Natalie Haag, Topeka
- * Julie Mulvihill, Perry
- Kim Perez, Hays
- Linda K. Smith, Salina
- Lisa D. Stubbs, Topeka
- * Jason Wesco, Pittsburg

Advocate - \$150-\$249

- Anonymous
- Patricia Ackerman, Abilene
- * Donald Biggs, Kansas City MO
- * Charles & Dianne Brown, Emporia
- Bill Cutler & Elisabeth Suter, Topeka
- Larry Erickson, Topeka
- * Peggy Frahm, Colby
- * John & Ines Gilbert, Lawrence
- * Anne Greitl, Topeka
- * Ross & Brenda Hicks, Winfield
- Howard Hildenbrand, Lecompton

Benefactor - \$500-\$749

- Jim & Mary Lou Birkbeck, Holton
- * Tony Brown & Becky Henderson, Baldwin City
- * Deborah & John Divine, Salina
- * Cheryl Hofstetter Duffy, Hays
- Lori A. Goetsch, Manhattan
- * Kelly & Patrick Landes, Junction City

Continued on pg. 3

* Martha Selfridge Housholder, Wichita
 * Carolyn Huebner, Topeka
 * Linda O'Nelio Knoll, Pittsburg
 * Bill & Wilma Mai, Sharon Springs
 * Carol Mullen, Lawrence
 * Leo E. Oliva, Woodston
 * Tracy Quillin, Lawrence
 * Verlyn Richards, Manhattan
 * Elizabeth Schultz, Lawrence
 * John Stauffer, Topeka
 * Pamela & Peter Steitz, Sun Prairie WI
 * Warren & Carol Sweat, Wallace
 * Lawrence & Donna Thonen, Hiawatha
 * William M. Tuttle, Jr., Lawrence
 * David & Barbara Walker, Saddlebrooke AZ
 * Ron & Barbara Wood, Fort Scott

Supporter - \$100

* JoAnn Cool Alban, Glasco
 * Richard Baker, Topeka
 in memory of Max Yoho
 * Marijean Berg, Wichita
 * Judy Billings, Almont CO
 * Bill & Susan Bunyan, Dodge City
 * Dean I. Dillard, Chanute
 * Chris & Kaye Drahozal, Lawrence
 * Jean Kygar Eblen, Lawrence
 * Tom & Cynthia Enstrom, Topeka
 * Michael J. Fox & Sue Schlegel, Lindsborg
 * Kent & Susan Garlinghouse, Topeka
 * Maryemma Graham, Lawrence
 * Jack Granath, Bonner Springs
 * Larry & Robbi Heck, Wichita
 * Steven & Annabeth Hind, Hutchinson
 * Lidia Hook-Gray, Liberal
 * Don Hornbaker, St. John
 * Jim & Cathy Hoy, Emporia
 * William H. Jenkins, Wichita
 * Mike Kautsch, Lawrence
 * James P. & Eloise Kelly, Independence
 * Sarah Kirk, Lecompton
 * Elizabeth Knitter, Downs
 * Sharon & Joel Kriss, Manhattan
 * Joel Kuchera & Valerie Brown-Kuchera, Quinter
 * Judy Bontrager Langley, Hutchinson
 * Ruth Lichtenstern, Topeka
 in memory of Max Yoho
 * Carolyn D. Lindsey, Wichita
 * Ann E. Liston, Wilson
 * Jerry D. Lomshek, Pittsburg
 * Jean Lundt, Independence
 * Jim Maag, Topeka
 * Ruth Madell, Topeka
 * Art Mai, Sharon Springs
 * James & Linda McHenry, Topeka

Friend - Up to \$99

Shala Mills & Darrell Hamlin, Hays
 Linda Morse, Manhattan
 Lona Morse, Topeka
 Keith & Denise Olsen, Horton
 Douglas Penner & Raylene Hinz-Penner, Topeka
 Loren Pennington, Emporia
 Joe Pierron & Diana Carlin Pierron, Lawrence
 Roger & Lin Rhoades, Overland Park
 Bill & Linda Richter, Manhattan
 Murl Riedel, Topeka
 Betsy Rohleder, Topeka
 in memory of Max Yoho
 * Frank C. Sabatini, Topeka
 * David & Carolyn Seaton, Winfield
 * Robert & Mary Seymour, Leavenworth
 * Bradley & Susan Shaw, Manhattan
 * Paul Steele, Colby
 * Kent R. Thomas, Wichita
 * John & Kathy Triplett, Junction City
 * Leslie & Tim Von Holten, Lawrence
 * Stephen Wolgast, Topeka
 * Lee Wright and Alice Eberhart-Wright, Topeka
 * John Wunder, Lincoln NE
 in memory of Rita Napier

* Katie Armitage, Lawrence
 * Tom Averill & Jeffrey Ann Goudie, Topeka
 * James & Constance Banwart, Fort Scott
 * Barbara A. Becker, Lawrence
 * Ann Birney, Admire
 * James & Edna Boyer, Manhattan
 * Carlton H. Broadbent, Beloit
 * Patricia & William Clyde Brown, Salina
 * Dan Brungardt & Steve Girolami, Topeka
 * Catherine Campbell, Lawrence
 * Jeff Carson, Topeka
 * Mary Conrad, Kansas City
 * Annabelle Corrick, Topeka
 in memory of Max Yoho
 * Virginia Crai, Topeka
 * Rosie Cutrer, Topeka
 in memory of Max Yoho
 * Sonja Czarnecki and Eric McHenry, Lawrence
 * Virgil & Jan Dean, Lawrence
 * Butch & Marilyn Dowse, Topeka
 in memory of Max Yoho
 * Felix & Jane Dreher, Pittsburg
 * Margaret Dunlap, Topeka
 * Ethel Edwards, Topeka
 in memory of Max Yoho
 * Marianne Eichelberger, Newton

Gwendolyn Elliott, Topeka
 in memory of Max Yoho
 * John C. English, Baldwin City
 * Brian & Christine Ewing, Wakarusa
 * Jean Fanshier, Stafford
 * Roger & Arrilla Fedde, Mankato
 * Donald Filiatreault, Topeka
 in memory of Max Yoho
 * Bill & Eenie Fitzpatrick, Independence
 * Marci Francisco, Lawrence
 * Conrad & Judy Froehlich, Chanute
 * Rodger & Vivian Funk, Garden City
 * Raney & Jill Gilliland, Topeka
 in memory of Max Yoho
 * Karen & Jim Gilpin, Iola
 * Gloria Girod, East Falmouth MA
 * Diane Glancy, Prairie Village
 * Peggy Goertzen, Hillsboro
 * Web & Joan Golden, Lawrence
 * Jimm Goodtracks, White Cloud
 * Marlene Grittman, Glasco
 * Ellen R. Hansen, Emporia
 * Louise & Allan Hanson, Lawrence
 * Dorothy Harder, Topeka
 in memory of Max Yoho
 * Joe & Lindsley Hartman, Elkhart
 * June Hilbert, Meriden
 in memory of Max Yoho
 * Millie Hodges, Topeka
 in memory of Max Yoho
 * Greg Hoots, Kansas City
 * Nancy Hope, Lawrence
 * Jane & Mickey Imber, Lawrence
 * Val Ireland, Topeka
 in memory of Max Yoho
 * Gail James, Overland Park
 * Bob Jensen & Gay Crawford, Topeka
 in memory of Max Yoho
 * Paula Johnson, Baldwin City
 * Jennifer & Bill Kassebaum, Burdick
 * Agnes Kazminski, Topeka
 in memory of Max Yoho
 * Meldon & Carrie Kirk, Overland Park
 * Jessie Koci, Auburn
 in memory of Max Yoho
 * Elizabeth A. Kowalchuk, Lawrence
 * Clarence Lang, Lawrence
 * Louis Langberg, St Paul MN
 in memory of Max Yoho
 * Nancy Keim Lengel, McPherson
 * Linda M. Lewis, Lindsborg
 * Mindi Love, Overland Park
 * Denise Low, Lawrence
 * Don & Diane Low, Lawrence
 * Ed & Brenda Martin, Wamego
 in memory of Max Yoho
 * Ruth Maus, Topeka
 * Elizabeth McDonald, Lenexa
 * Patti Meade, Rossville
 in memory of Max Yoho
 * Charles & Joyce Menghini, Pittsburg
 * Walter Menninger, Topeka

Ronda Miller, Lawrence
Caryn Mirriam-Goldberg &
Ken Lassman, Lawrence
Darlene Morgans, Olathe
in memory of Max Yoho
* Donna Jones Morris, Sandy UT
Phil Morris, Topeka
in memory of Max Yoho
* Judy Curtis Naylor, Wichita
Al & Betsy Ortolani, Lenexa
* Mary Alice Pacey, Washington
Roger & Patti Palmer, Topeka
* Marci Penner, Inman
* Alvin & Gayle Peters, Garnett
* Ruth & Reed Peters, Larned
* Deborah & Duane Pomeroy, Topeka
* Tom & Katie Pott, Wichita
David E. Procter, Manhattan
Kevin J. Rabas & Lisa Moritz,
Emporia
Beverly Dodge Radefeld, Topeka
in memory of Max Yoho
Susan Rapsis, Bedford NH
in memory of Max Yoho
Sharon Read, Topeka
in memory of Max Yoho
* M. C. Reay, Manhattan
Jane Glotfelty Rhoads, Wichita
* Joan Richardson, Fredonia
* Robert Richmond, Topeka
Louis Riggs, Hannibal MO
WenDee Rowe, Inman
* Linda B. Ruhnke, Manhattan
* Fayeann Sandstrum, Winfield
* Barbara Schmidt, Independence
* Jan Shupert-Arick and Bill Arick,
Lawrence
* Richard & Frances Siemens,
North Newton
* James Sloan, Topeka
Martha Spacek, Topeka
* Keith L. & Aldine M. Sprunger,
North Newton
* Clinton L. & Delaine Stalker, Satanta
* Marshall & Janice Stanton, Salina
Margaret E. Stewart, Junction City
* Vikki Jo & George Stewart, Wichita
* Allen & Ila Stone, Hutchinson
Janet Stotts, Topeka
in memory of Max Yoho
* Ann Strecker, Topeka
Susan Sutton, Concordia
John Sweets & Renee Melchiorre,
Swannanoa NC
in memory of Rita Napier
Larry Tenopir, Topeka
Joy Thompson, Topeka
in memory of Max Yoho
John Edgar Tidwell, Lawrence
Karen Trail, Manhattan

David Vail, Kearney NE
Nancy Wagner, Topeka
in memory of Max Yoho
Diane Wahto, Wichita
* Alison Watkins, Lawrence
* Barbara Watkins, Lawrence
in memory of Rita Napier
Donald & Cynthia Whiteley, Lawrence
in memory of Max Yoho
* Sandra Wiechert, Lawrence
Meredith Wiggins, Lawrence
* Rita Williams, Sharon Springs
* June S. Windscheffel, Topeka
in memory of Max Yoho
Gary Winslow, Topeka
in memory of Max Yoho
* James Woelfel & Sarah Trulove,
Lawrence
* Donald & Beverley Worster,
Lawrence
* Norman Yetman, Lawrence
in memory of Rita Napier
* Carol Yoho, Topeka

Organizations

Leadership - \$1,000 and above

CCS Family Fund - Topeka
Community Foundation
Kansas Creative Arts Industries
Commission, Topeka
Kansas Museums Association,
Wichita
Mariah Fund, Dodge City
Matfield Station, Matfield Green
Prairie Band Potawatomi Nation,
Mayetta
Sunflower Foundation, Topeka
Territorial Kansas Heritage Alliance,
Lawrence
Topeka Area of Continuity of Care

Benefactor - \$500-\$999

Jedel Family Foundation,
Kansas City MO

Patron - \$250-\$499

Friends of Baldwin City Library
Security Benefit Group, Topeka

Advocate - \$150-\$249

Kinsley Public Library
Lakeview Book Club, Lenexa
* Morton County Historical Society,
Elkhart
Oberlin City Library
* Tex and Betty Fury Fund, Salina

Supporter - \$100-\$149

* Butler Community College,
El Dorado
Dodge City Convention & Visitors
Bureau

Finney County Public Library,
Garden City
Ford County Historical Society,
Dodge City
Franklin County Genealogical
Society, Ottawa
Kansas Newspaper Foundation,
Topeka
Lucy N. Stein Living Trust, Topeka
McDaniel Knutson Financial Partners,
Lawrence
in memory of Rita Napier
Meade County Historical Society,
Meade
* Overland Park Historical Society
* Santa Fe Trail Center, Larned
Unitarian Universalist Fellowship,
Topeka
University United Methodist Women,
Topeka
Wichita Genealogical Society

Friend - Up to \$99

Aldersgate Village, Topeka
AmazonSmile
Atchison Public Library
Chapman Area Preservation Society
* Clinton Lake Historical Society,
Lawrence
* Cowley County Historical Society,
Winfield
* Friends of Augusta Public Library
Friends of Chanute Public Library
Glasco Community Foundation
Graham County Historical Society,
Hill City
Lincoln County Historical Society,
Lincoln
Meadowlark Books, Emporia
in memory of Max Yoho
Mitchell County Fair Association,
Beloit
Photoplay, Inc., Overland Park
Rice County Historical Society, Lyons
* Solomon Valley-Hwy 24-Heritage
Alliance, Glasco
* Tonganoxie Community Historical
Society
Wilson County Conservation District,
Fredonia

*These numbers reflect the amount given,
not pledged. If we have made an error,
please accept our apologies and contact
our office at (785) 357-0359 or
info@kansashumanities.org.*

Kansas Humanities Council Grant Awards

Humanities Grants support projects that engage the public with the humanities. In FY 2017, KHC funded 15 Humanities grant projects totaling \$95,955.

Chanute Historical Society, *Riding the Rails of History: The Santa Fe Railroad and Fred Harvey in Chanute exhibition and public programs*

Community Resources Council, Inc., Topeka, *Brooksfest: A Gwendolyn Brooks Centennial Celebration*

Do Good Productions, Inc., Leawood, *Archiver podcast*

Dyck Arboretum of the Plains, Hesston, *Living the Land Ethic in Kansas symposium*

Finney County Historical Society, Garden City, *Garden City Works short film*

Freedom's Frontier National Heritage Area, Lawrence, *Strength in Numbers: Continuing the Interpretation of Quindaro symposium*

Johnson County Library Foundation, Shawnee Mission, *Race Project KC 2017-2018 public programs*

Kauffman Museum, North Newton, *Voices of Conscience: Peace Witness in the Great War exhibition and public programs*

Kinsley Public Library, Kansas Architecture: Reflections of Culture public programs

Lucas Area Chamber of Commerce, Home on the Range film presentation and screening

Sociedad Hidalgo, Inc., Shawnee, *Latin American Cinema Festival XXVI*

Spencer Museum of Art, University of Kansas, Lawrence, *African American Story Quilts exhibition*

Ulrich Museum of Art, Wichita, *looking at the overlooked public programs*

University of Kansas, Lawrence, *Black Love: A Symposium*

William Allen White Foundation, Lawrence, *William Allen White Sesquicentennial documentary film*

Heritage Grants

Heritage Grants support projects that preserve and interpret local history and cultural resources. In FY 2017, KHC funded five Heritage grant projects totaling \$16,892.

Ashland Library, *The 2017 Starbuck Fire and its Effect on the People of Clark County oral history project*

Koester House Museum, Marysville, *Koester House Museum – Telling the Stories preservation project*

Lecompton Historical Society, *Lecompton School Memorabilia inventory project*

Northeast Kansas Chapter #14 American Historical Society of Germans from Russia, Topeka, *Topeka's Germans from Russia oral history*

Goddard Woman's Club, Wichita, *Goddard Woman's Club preservation project*

Pulitzer Project in Kansas

To celebrate 100 years of the Pulitzer Prizes, the Kansas Humanities Council partnered with six organizations for *The Pulitzer Project in Kansas: William Allen White and Freedom of Speech*. The project was supported by a \$20,000 grant from the Pulitzer Prizes Board and the Federation of State Humanities Councils.

Douglas County Historical Society, Lawrence
Eisenhower Presidential Library and Museum, Abilene
Friends of Baldwin City Public Library

Friends of S.P. Dinsmoor's Garden of Eden, Inc., Lucas
Kansas City Kansas Community College
Kansas Scholastic Press Association, Lawrence

The Bill of Rights and You

A pop-up display exhibited at 13 sites in Kansas, "The Bill of Rights and You" was presented in partnership with the Federation of State Humanities Councils and the National Archives.

Atchison County Historical Society
Bonner Springs City Library
Dodge City Public Library
Goodland Public Library
Harper Public Library
Haysville Community Library
Humboldt Historic Preservation Alliance

Johnson County Library – Lackman Branch, Lenexa
Lincoln Library, Medicine Lodge
Oakley Public Library
Pleasanton Lincoln Library
Topeka and Shawnee County Public Library
Winfield Public Library

Water/Ways

Anchored by a Smithsonian Institution traveling exhibition of the same name, the *Water/Ways* statewide initiative explores water and the ways it shapes our lives. *Water/Ways* is sponsored in partnership with the Smithsonian Institution's Museum on Main Street program. *Water/Ways* was made possible with funding from the following organizations: CCS Family Fund-Topeka Community Foundation, Mariah Fund, Matfield Station, Prairie Band Potawatomi Nation, Sunflower Foundation, and Territorial Kansas Heritage Alliance.

Seven Kansas organizations hosted the Smithsonian exhibition:

- Boot Hill Museum, Dodge City
- Eudora Area Historical Society
- Geary County Historical Society & Museums, Junction City
- Hesston Public Library
- Museum at Prairiefire, Overland Park
- Symphony in the Flint Hills Gallery, Cottonwood Falls
- Thomas County Historical Society, Colby

Nine organizations explored the water theme through independent exhibitions and public programs:

- Big Well Museum, Greensburg
- Fort Scott Area Chamber of Commerce
- Franklin County Historical Society, Ottawa
- Marion City Library
- Mr. and Mrs. F.L. Schlagle Library and Environmental Learning Center, Kansas City
- Rice County Historical Society, Lyons
- Solomon Valley-Highway 24-Heritage Alliance, Glasco
- Stanton County Museum, Johnson City
- Wilson County Conservation District, Fredonia

Community Resources

In FY 2017, KHC funded 355 Speakers Bureau presentations and Talk About Literature in Kansas book discussions totaling \$123,200.

- Abilene Public Library
- Aldersgate Village, Topeka
- Ashland Library
- Atchison County Extension Office, Effingham
- Atchison County Historical Society, Effingham
- Atchison Public Library
- Augusta Public Library
- Baker University, Baldwin City
- Barber County Extension Office, Medicine Lodge
- Barton County Historical Society, Great Bend
- Basehor Community Library
- Belleville Public Library
- Bethel College, North Newton
- Bethel College, Life Enrichment, North Newton
- Big Well Museum, Greensburg
- Bonner Springs City Library
- Boot Hill Museum, Dodge City
- Bradford Memorial Library, El Dorado
- Brewster Place Retirement Community, Topeka
- Burlington Branch of Coffey County Library
- Business & Professional Women of Kansas, Topeka
- Butler Community College, Community Advancement, El Dorado
- Butler Community College, Nixon Library, El Dorado
- Caldwell Chamber of Commerce
- Caldwell Public Library
- Chanute Historical Society
- Chanute Public Library

- Chapman Area Preservation Society
- Cherokee Strip Land Rush Museum, Arkansas City
- Cheyenne Center for Creativity, St. Francis
- Chisholm Trail Seniors, Park City
- City of Dodge City
- Clearwater Public Library
- Clinton Lake Historical Society, Lawrence
- Cloud County Historical Society Museum, Concordia
- Coffey County Historical Society & Museum, Burlington
- Council Grove Public Library
- De Soto Historical Society
- Derby Public Library
- Dodge City Public Library
- Doniphan County Library District 1, Wathena
- Donnelly College, Kansas City
- Dorothy Bramlage Public Library, Junction City
- Douglas County Youth Services, Lawrence
- Edwards County Historical Society, Kinsley
- Eisenhower Foundation, Abilene
- Ellsworth County Historical Society
- Eudora Area Historical Society
- Eureka Public Library
- Finney County Public Library, Garden City
- First Christian Church, CWF, Scott City
- Ford County Extension Office, Dodge City
- Frank Carlson Library, Concordia
- Frankfort City Library
- Franklin County Historical Society/Old Depot Museum, Ottawa
- Frederic Remington Area Historical Society, Whitewater
- Friends of Baldwin City Library

- Friends of Caldwell Public Library
- Friends of Derby Public Library
- Friends of Fort Scott National Historic Site
- Friends of Haysville Community Library
- Friends of Jay Johnson Public Library, Quinter
- Friends of Park City Public Library
- Gardner Historical Museum
- Garnett Public Library
- Geary County Historical Society & Museums, Junction City
- Glen Elder Library
- Goodland Public Library
- Graham County Historical Society, Hill City
- Graham County Public Library, Hill City
- Greenwood County Historical Society, Eureka
- Gridley Branch of Coffey County Library
- Halstead Public Library
- Harper Public Library
- Harvey County Historical Museum & Archives
- Hays Public Library
- Hesston Public Library
- High Plains Museum, Goodland
- Highland Community College
- Hutchinson Community College
- Hutchinson Public Library
- Independence Public Library
- Iola Public Library
- Jackson County Historical Society, Holton
- Jefferson County Extension Office, Winchester
- Jetmore Public Library
- Kansas Assn of Retired School Personnel, Hutchinson
- Kansas Authors Club, District 5, Wichita

Continued from pg. 6

Kansas City Kansas Public Library
Kansas Legislative Spouses Association,
Topeka
Kansas-Oklahoma Conference for UCC
Women, Wichita
Kansas Oil Museum, El Dorado
Kansas State University at Salina
Kansas Territory Bottle & Postcard Club,
Hutchinson
Kansas Wildlife Federation, Milford
Kauffman Museum, North Newton
Kearny County Historical Society and
Museum, Lakin
Kearny County Library, Lakin
Kinsley Public Library
Kiowa County Historical Museum and
Soda Fountain, Greensburg
La Cygne Historical Society
Lakeview Village Retirement Community,
Lenexa
Lansing Community Library
Larned Correctional Mental Health Facility
Leavenworth Public Library
Lebo Branch of Coffey County Public
Library
LifeVentures, Wichita
Linda Hunt Memorial Library, Pratt
Community College
Lucas Arts & Humanities Council
Manhattan Public Library
Marysville Public Library

McCracken Public Library
Monticello Community Historical Society,
Shawnee
Morton County Library, Elkhart
Moundridge Arts Council
Moundridge Chamber of Commerce
New Generation Society of Lawrence
Newman University, Wichita
Newton Public Library
Nickerson Public Library
Norton Public Library
Oberlin City Library
Old Cowtown Museum, Wichita
Overland Park Historical Society
Park City PRIDE
Parsons Public Library
Perry Pride
Pioneer Memorial Library, Colby
Pittsburg Public Library
Pratt County Historical Society Museum
Pratt Public Library
Rice County Historical Society, Lyons
Rooks County Economic Development,
Stockton
Rooks County Historical Society &
Museum, Stockton
Rose Hill Historical Society
St. Marys Literary Club
Seward County Community College
Library, Liberal
Shawnee Town 1929 Museum
Shepherd's Center of Kansas City
Smoky Hill Museum, Salina

Smoky Valley Historical Association,
Lindsborg
Solomon Valley-Highway 24-Heritage
Alliance, Alton
Solomon Valley-Highway 24-Heritage
Alliance, Glen Elder
Southwest Kansas Library System,
Dodge City
Stafford County Historical & Genealogical
Society, Stafford
Stanton County Museum, Johnson
Sterling College
Sumner County Historical & Genealogical
Society, Wellington
Thomas County Historical Society, Colby
Tonganoxie Community Historical Society
Topeka Genealogical Society
Topeka & Shawnee County Public Library
Trego County Historical Society,
WaKeeney
United Methodist Church, Hesston
Volland Store, Alma
Wamego Public Library
Wellington Public Library
Wichita Public Library Foundation
Wichita-Sedgwick County Historical
Museum
Wilson County Conservation District,
Fredonia
Winfield Public Library

Poet Laureate of Kansas

The Poet Laureate of Kansas™ program supported local poetry presentations by Poets Laureate of Kansas Eric McHenry and Kevin Rabas in 16 communities in FY 2017. The Poet Laureate of Kansas program is supported by individual, corporate, and foundation gifts.

Basehor Community Library
Clearwater Public Library
Donnelly College, Kansas City
Ecumenical Christian Ministries, Lawrence
Highland Community College
Johnson County Library, Overland Park
Larned Correctional Mental Health Facility
Leavenworth Public Library

Newton Public Library
Northwest Kansas Library System, Sharon Springs
Ottawa Library
Paola Chamber of Commerce
Paola Free Library
Seward County Community College Library, Liberal
Sterling College
Wichita Public Library

Project Partnership Events

In FY 2017, KHC partnered with the following organizations for special projects and events.

Boot Hill Museum, Dodge City & Museum on Main Street,
Washington, DC, *Latino Americans Oral History Project*

KTWU Washburn University, Topeka, *Sunflower Journeys*
television program

Midwest Center for Nonprofit Leadership, Kansas City MO,
Fundraising Booster Camp for Cultural Nonprofits

MuseumHack, New York, NY, *Creativity Boot Camp for Cultural*
Nonprofits

Wichita Public Library, *Candid Conversations: A Discussion of*
Race in Wichita



112 SW 6th Ave., Suite 400
 Topeka KS 66603-3895
 (785) 357-0359
 (785) 357-1723 fax
 info@kansashumanities.org
 www.kansashumanities.org

Nonprofit Org.
 U.S. Postage
PAID
 Kansas City MO
 Permit No. 523

Kansas Humanities Council Outreach FY 2017

Using KHC grants and resources, 119 communities created 610 humanities opportunities for the people of Kansas.

